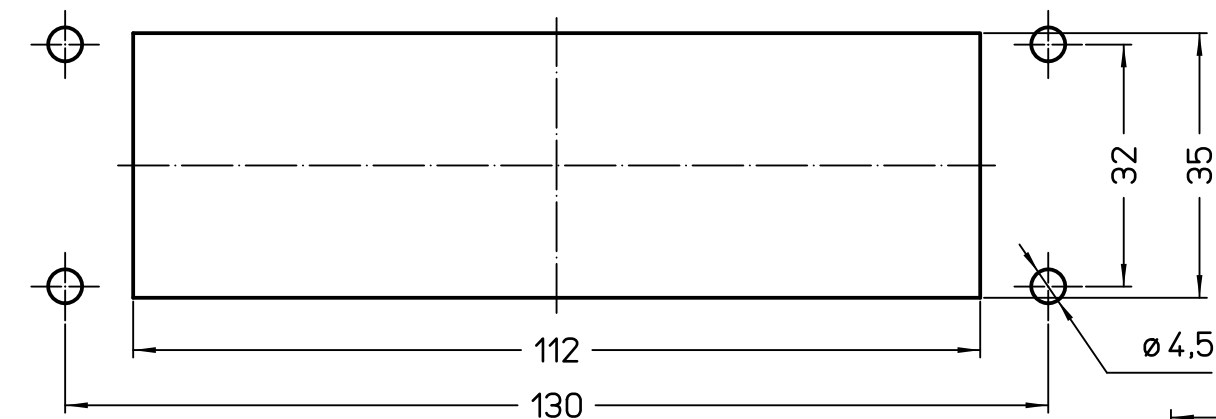
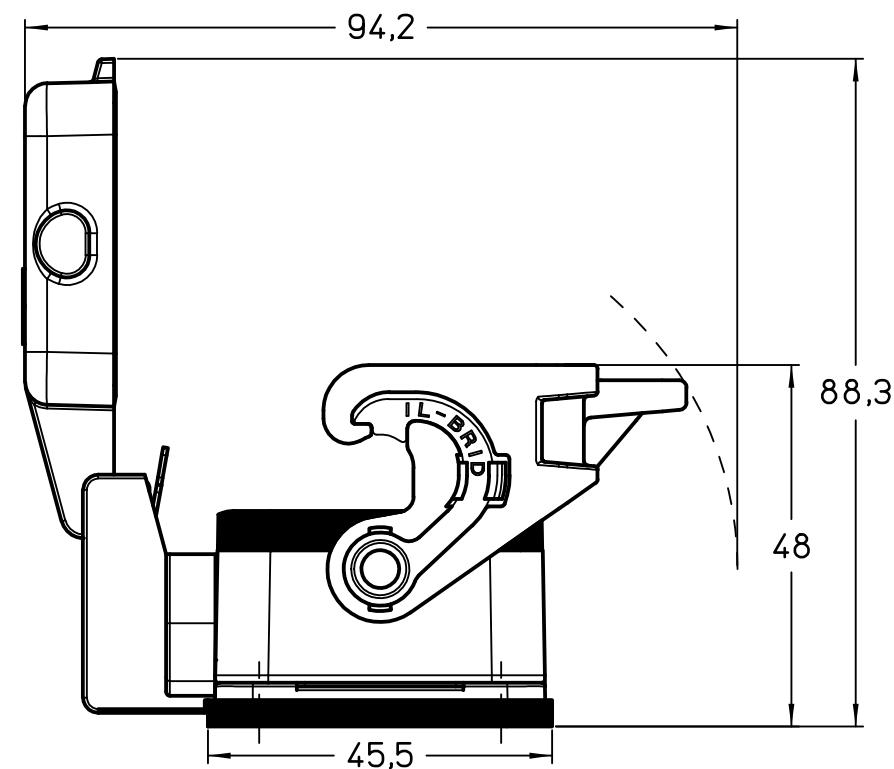
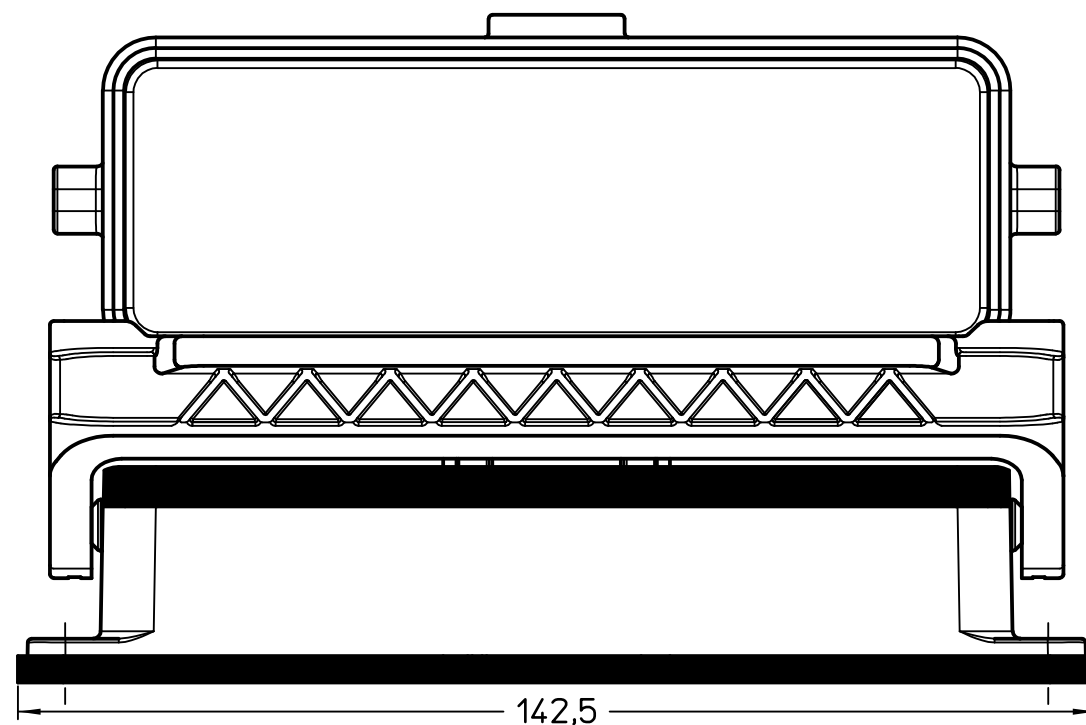
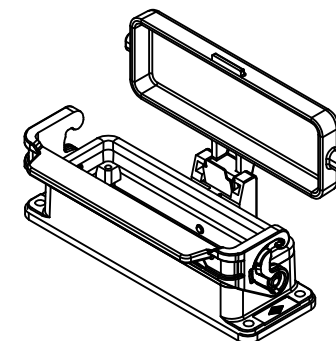


Diritti riservati

All rights reserved



Panel cut-out



	Dimensions in mm
Original Size A4	
Date 07/03/23	
Sign. G. Renna	

Simplified representation with dimensions without tolerance

CLI 24 LS

bulkhead mounting housing size "104.27", with 1 IL-BRID lever and cover

Scale  
1:1

